

# Home Plan

## Makeover

Two Women Turn an Existing Plan into a Dream Home.

For some time, Design Basics, *Her Home's* parent company, has staged its own version of the popular television program, "Extreme Makeover, Home Edition." While Ty Pennington and his design team are absent, we do have some insightful professionals from the home construction industry who get together to update and redesign a perennially popular home plan.

This issue's Makeover Team is profiled on page 21. They were handed copies of Design Basics' plan, the Morgan (#2927-54J), shown at left. With the help of one of Design Basics' designers, they changed it into the Rossville, #42033-54J, shown on page 21. To allow you to follow the changes, the women's requests are highlighted in 11 numbers – which correspond with the completed floor plan on the right.

**1** To provide a view of the great room from the front entry, Christine suggested reconfiguring the staircase and moving the rooms in the back of the home, putting the great room (formerly called a gathering room) in the center. The revised view was framed with a picturesque, arched opening. To accommodate Christine's request to provide as much glass as possible on the back wall, the fireplace was moved to a corner. A cathedral ceiling was added for a sense of drama.

**2** In answer to Rebecca's desire for a more open floor plan and Christine's wish to eliminate steps between the kitchen and dining room, the designer moved the dining room to the rear of the home and slid the kitchen to the left. This created the larger dining room Christine required. Stylish columns divide the great room and dining room.

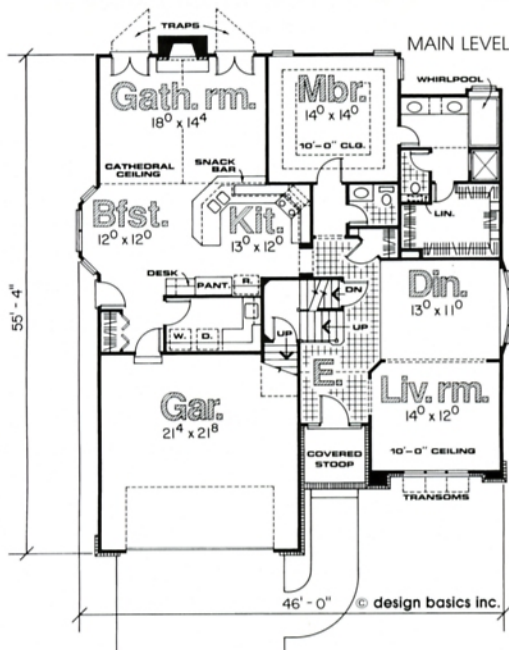
**3** Responding to both women's wish for a larger pantry, a roomy, walk-in pantry was added in the kitchen. Heeding Christine's advice, the desk was removed. A large, octagonal island with a sink provides a roomy workspace and an angled snack bar that allows diners to face each other.



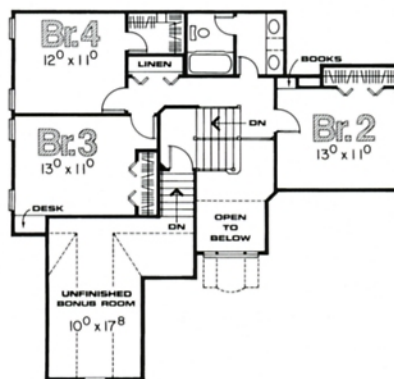
**2927-54J Morgan** HOME PLAN PRICE \$865  
 MAIN 1688 SQ. FT. | SECOND 715 | TOTAL 2403 SQ. FT.  
 FOUNDATION: BASEMENT



**BEFORE**



SECOND LEVEL



UNFINISHED STORAGE ADDS 251 SQ. FT.

